

20% OFF EVERYTHING AT MAILSHOP

THIS WEEKEND ONLY. SEE INSIDE WEEKEND MAGAZINE

Scottish Daily Mail

SATURDAY, NOVEMBER 12, 2016

£1



SUPERB PULL-OUT

The definitive guide to **ANTI-AGEING**

treatments

What works, what hurts... and what's a waste of money!

SEE CENTRE PAGES



Retailers cash in on Christmas spending

THE GREAT STORE CARD FEE RIP-OFF

HIGH Street retailers are today accused of cashing in on the pre-Christmas spending boom with 'extortionate' rates on their credit cards.

Research reveals that some of

By **Louise Eccles**
Personal Finance Correspondent

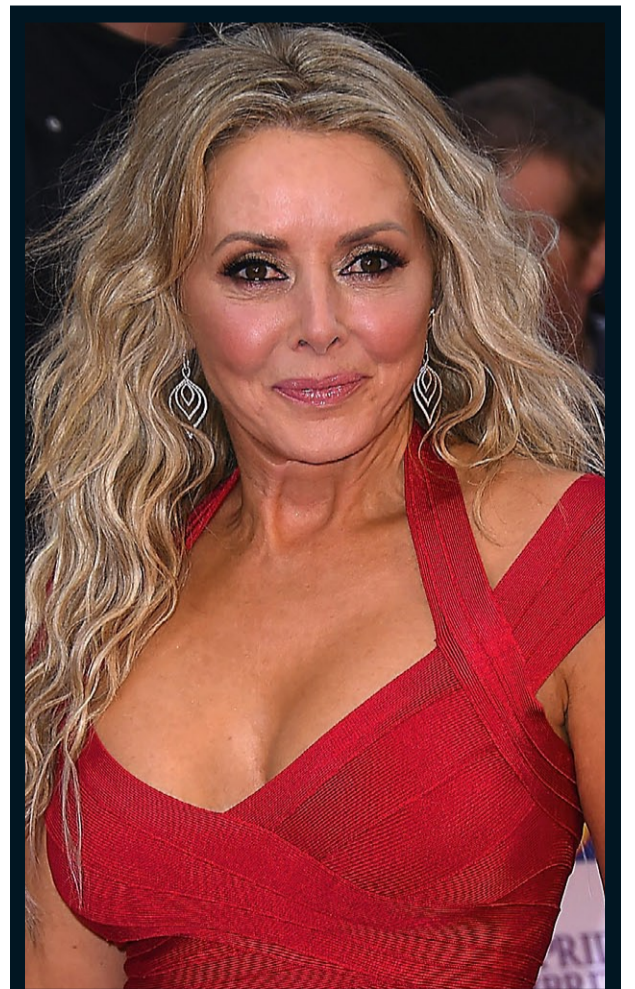
the nation's best-loved shops levy rates of almost 30 per cent on their credit cards, with those owned by former BHS boss Philip Green among the worst.

This is a third higher than the

charges for a typical credit card – and almost 120 times the Bank of England's official base rate.

It means that customers face paying up to £200 in interest if they go on a £500 shopping spree, then make the minimum repayments to clear the balance.

More than a million people are
Turn to Page 4



Dark times: Carol Vorderman revealed her struggle

Carol: I battled depression

SEE PAGE 17